



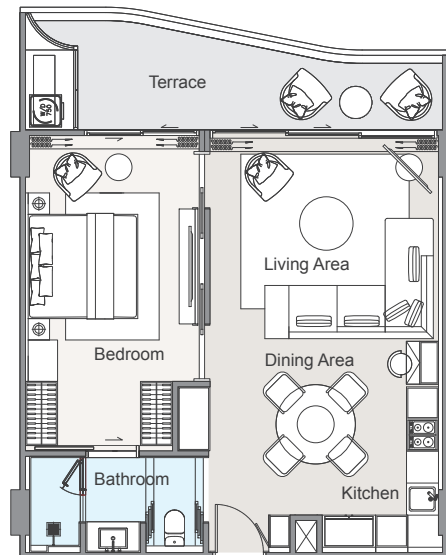


1B-A

Internal area : 61 m²
External area : 14 m²
Total area : 75 m²



 1-Bedroom
 1-Bathroom



 1-Living & dining area
 1-Private terrace

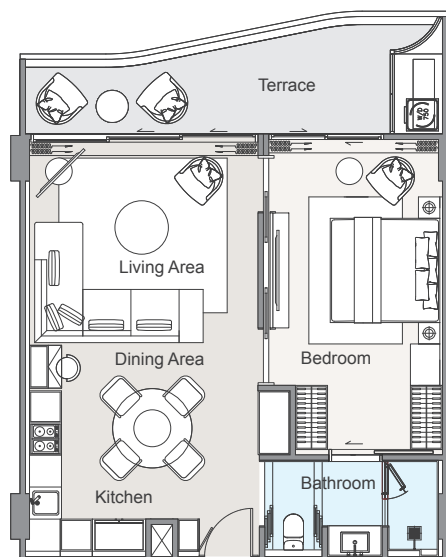


1B-A (M)



Internal area : 61 m²
External area : 14 m²
Total area : 75 m²



 1-Bedroom
 1-Bathroom

 1-Living & dining area
 1-Private terrace

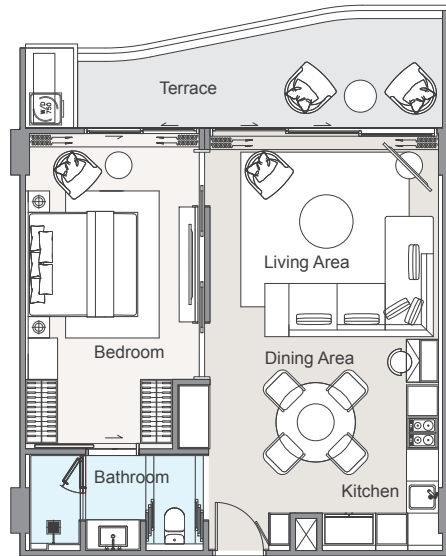


1B-B



-  1-Bedroom
-  1-Bathroom



-  1-Living & dining area
-  1-Private terrace

Internal area : 61 m²
External area : 14 m²
Total area : 75 m²

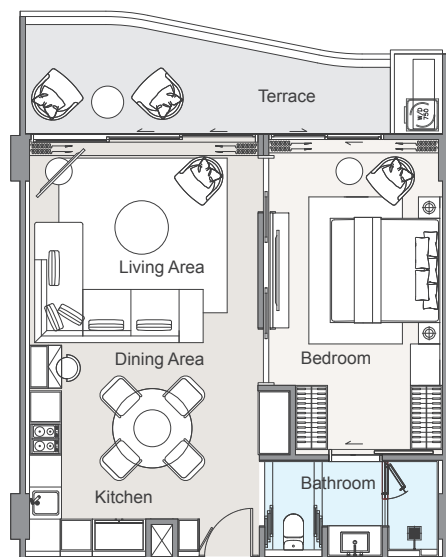


1B-B (M)

-  1-Bedroom
-  1-Bathroom

-  1-Living & dining area
-  1-Private terrace

Internal area : 61 m²
External area : 14 m²
Total area : 75 m²




2B-A

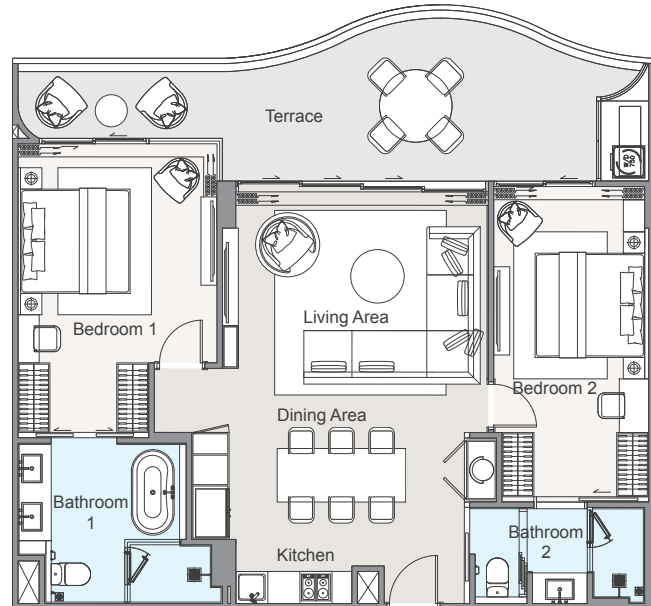
Internal area : 95 m²
External area : 27 m²
Total area : 122 m²

 2-Bedrooms

 2-Bathrooms

 1-Living & dining area


 1-Private terrace




2B-A (M)

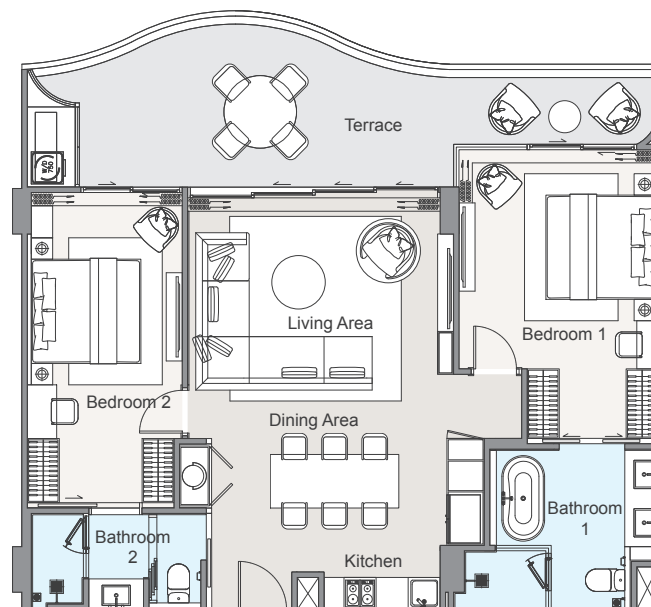
Internal area : 95 m²
External area : 27 m²
Total area : 122 m²

 2-Bedrooms

 2-Bathrooms



 1-Living & dining area



 1-Private terrace

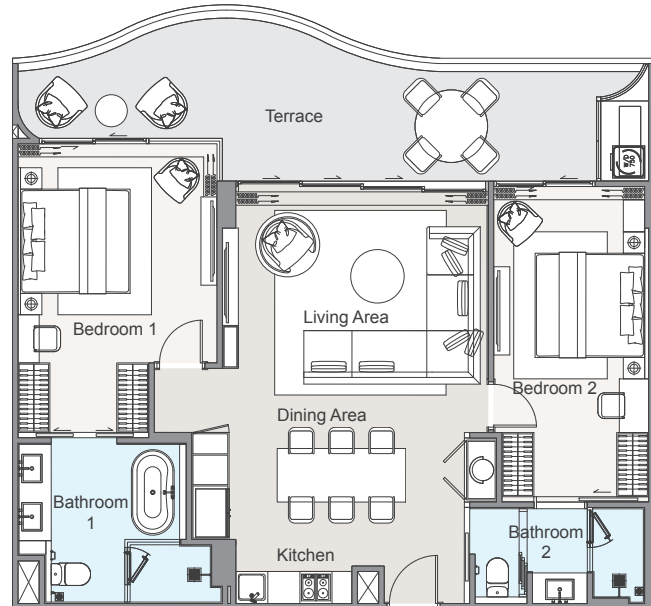


2B-B

Internal area : 95 m²
External area : 27 m²
Total area : 122 m²



 2-Bedrooms
 2-Bathrooms



 1-Living & dining area
 1-Private terrace

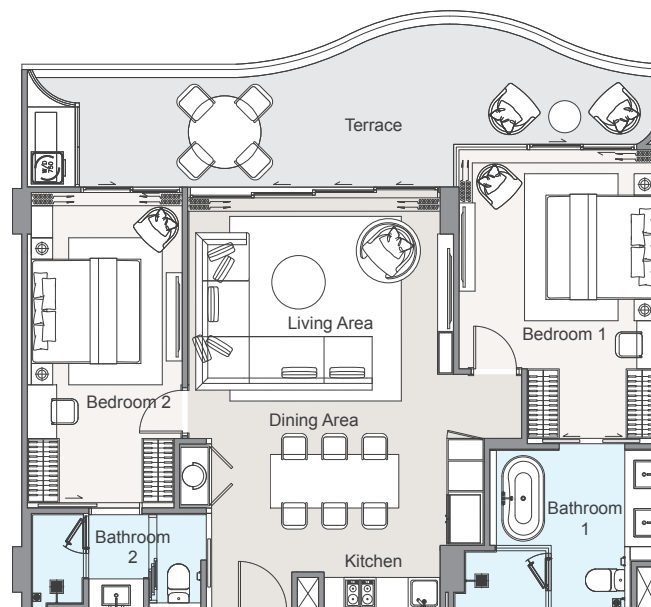


2B-B (M)

Internal area : 95 m²
External area : 27 m²
Total area : 122 m²




 2-Bedrooms
 2-Bathrooms



 1-Living & dining area
 1-Private terrace

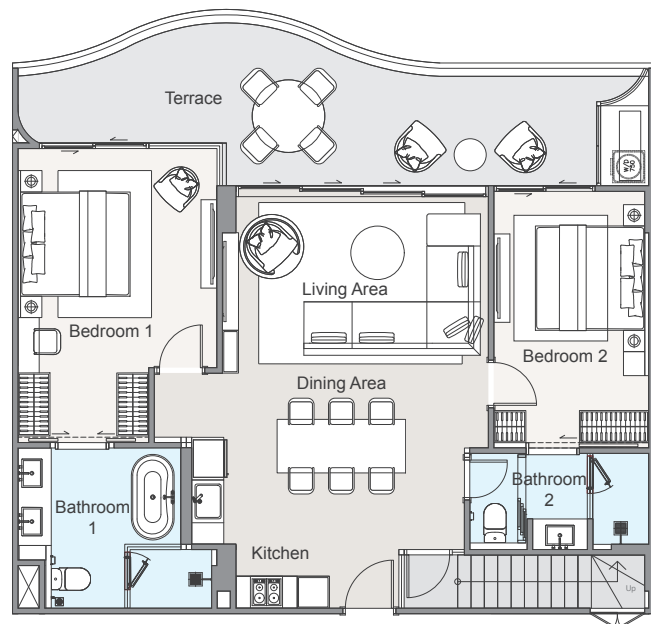


2B-C PENTHOUSE

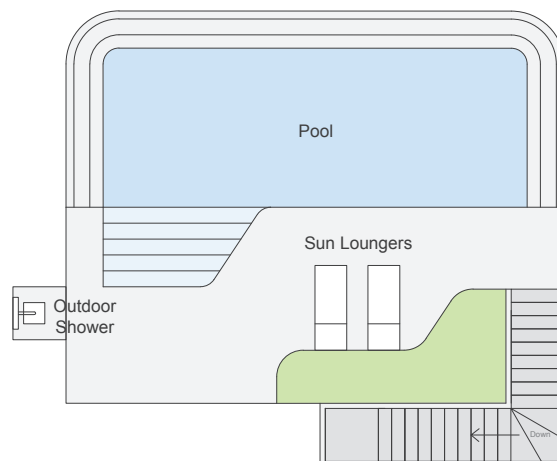
Internal area	:	91 m ²
External area (Lower floor)	:	31 m ²
External area (Rooftop floor)	:	45 m ²
Pool	:	31 m ²
Total area	:	198 m²

-  2-Bedrooms
-  2-Bathrooms
-  1-Living & dining area

-  2-Private terraces
-  1-Private pool






LOWER FLOOR





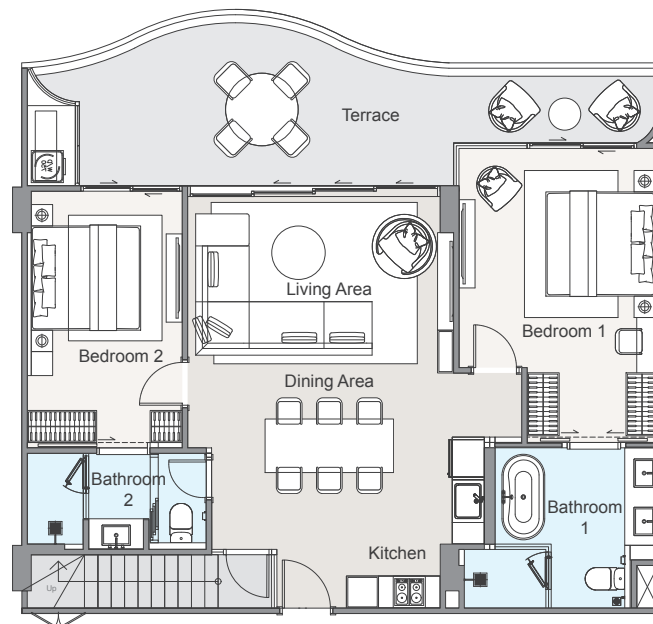
ROOFTOP FLOOR

2B-D PENTHOUSE

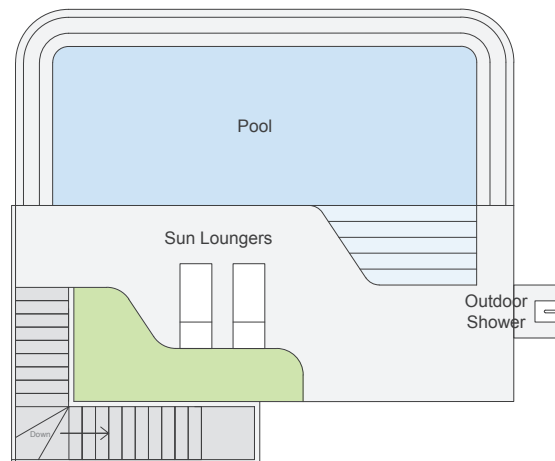
Internal area	:	91 m ²
External area (Lower floor)	:	31 m ²
External area (Rooftop floor)	:	45 m ²
Pool	:	31 m ²
Total area	:	198 m²

-  2-Bedrooms
-  2-Bathrooms
-  1-Living & dining area

-  2-Private terraces
-  1-Private pool






LOWER FLOOR





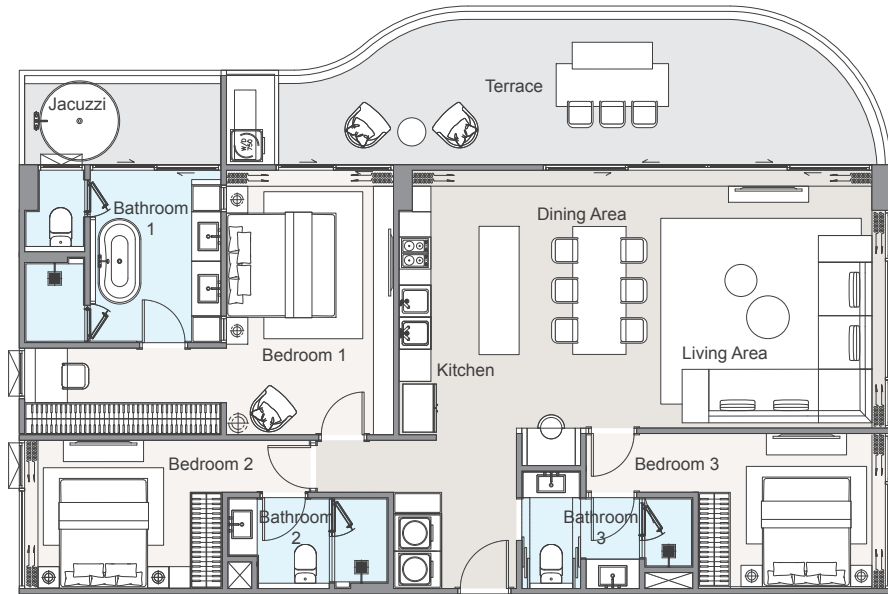
ROOFTOP FLOOR

3B-A

Internal area : 125 m²
External area : 36 m²
Total area : 161 m²




-  3-Bedrooms
-  3-Bathrooms
-  1-Living & dining area



-  1-Private terrace
-  1-Jacuzzi

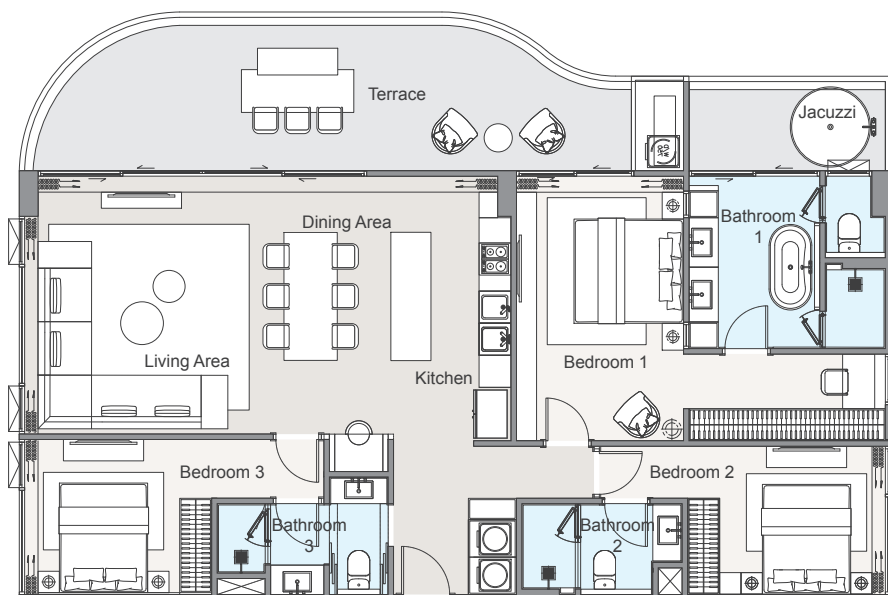


3B-A (M)

Internal area : 125 m²
External area : 36 m²
Total area : 161 m²

-  3-Bedrooms
-  3-Bathrooms
-  1-Living & dining area

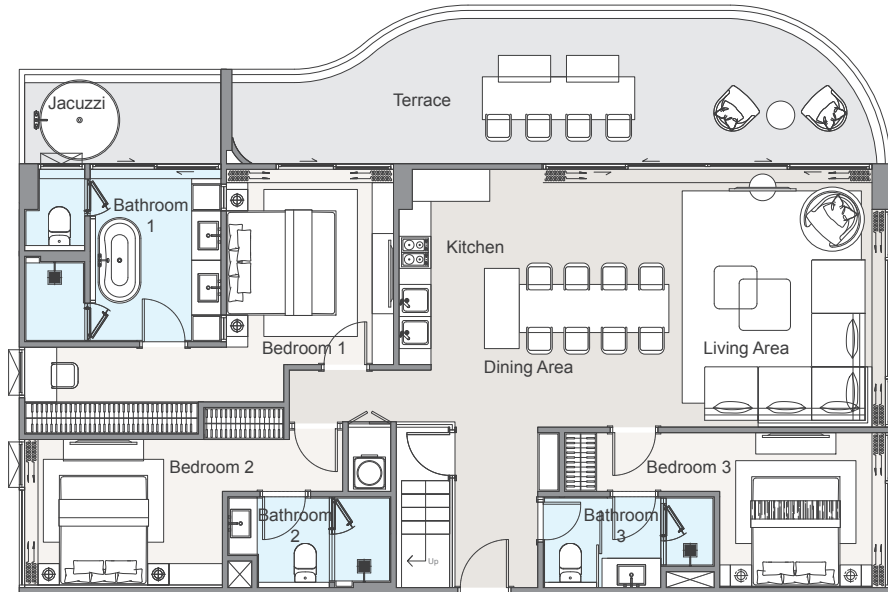
-  1-Private terrace
-  1-Jacuzzi



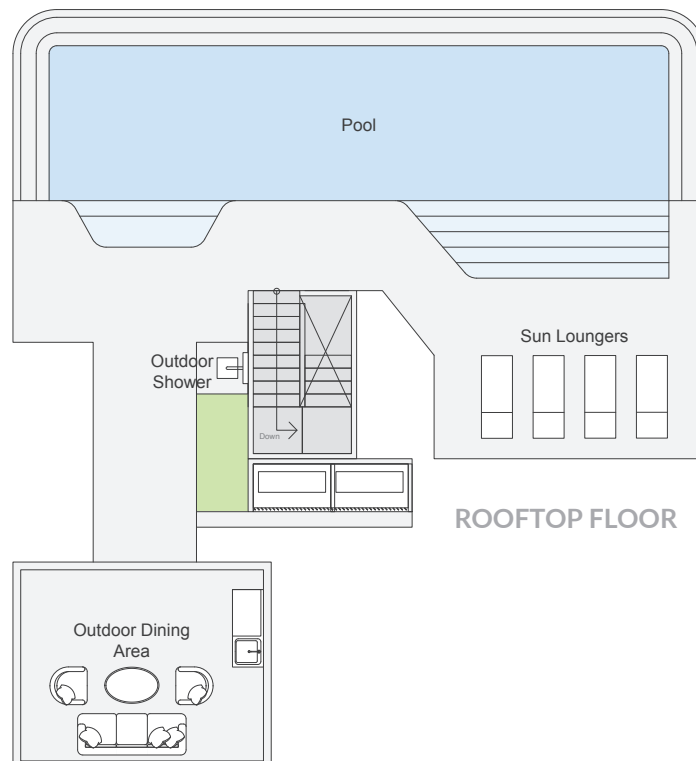
3B-B PENTHOUSE

Internal area : 122 m²
 External area (Lower floor) : 39 m²
 External area (Rooftop floor) : 88 m²
 Pool : 49 m²
Total area : 298 m²

-  3-Bedrooms
-  3-Bathrooms
-  1-Living & dining area
-  2-Private terrace
-  1-Jacuzzi
-  1-Private pool



LOWER FLOOR

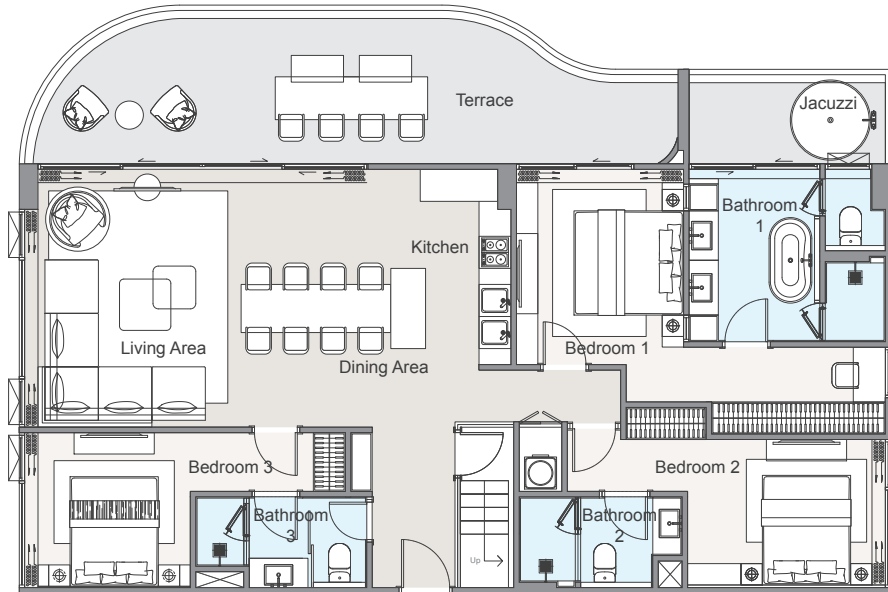


ROOFTOP FLOOR

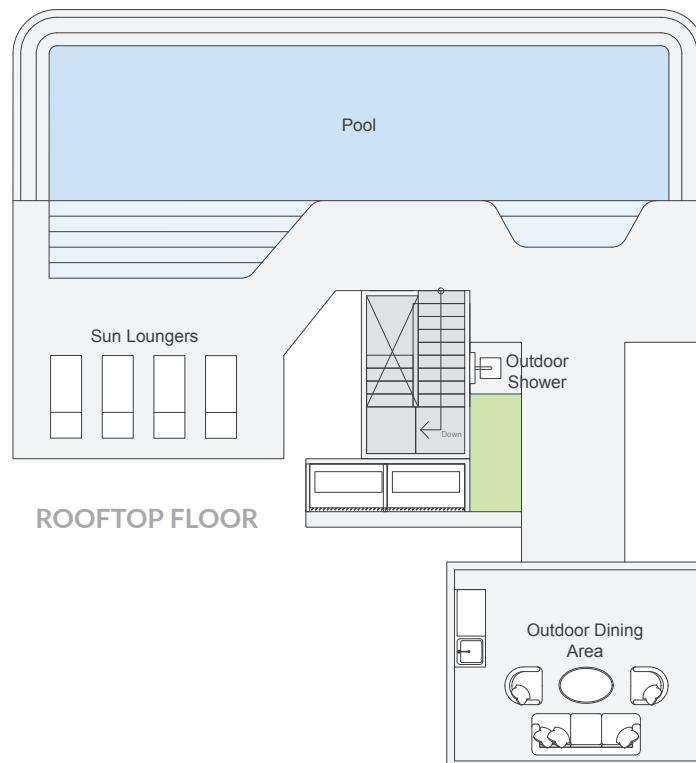
3B-B (M) PENTHOUSE

Internal area : 122 m²
 External area (Lower floor) : 39 m²
 External area (Rooftop floor) : 88 m²
 Pool : 49 m²
Total area : 298 m²

-  3-Bedrooms
-  3-Bathrooms
-  1-Living & dining area
-  2-Private terrace
-  1-Jacuzzi
-  1-Private pool










LOWER FLOOR

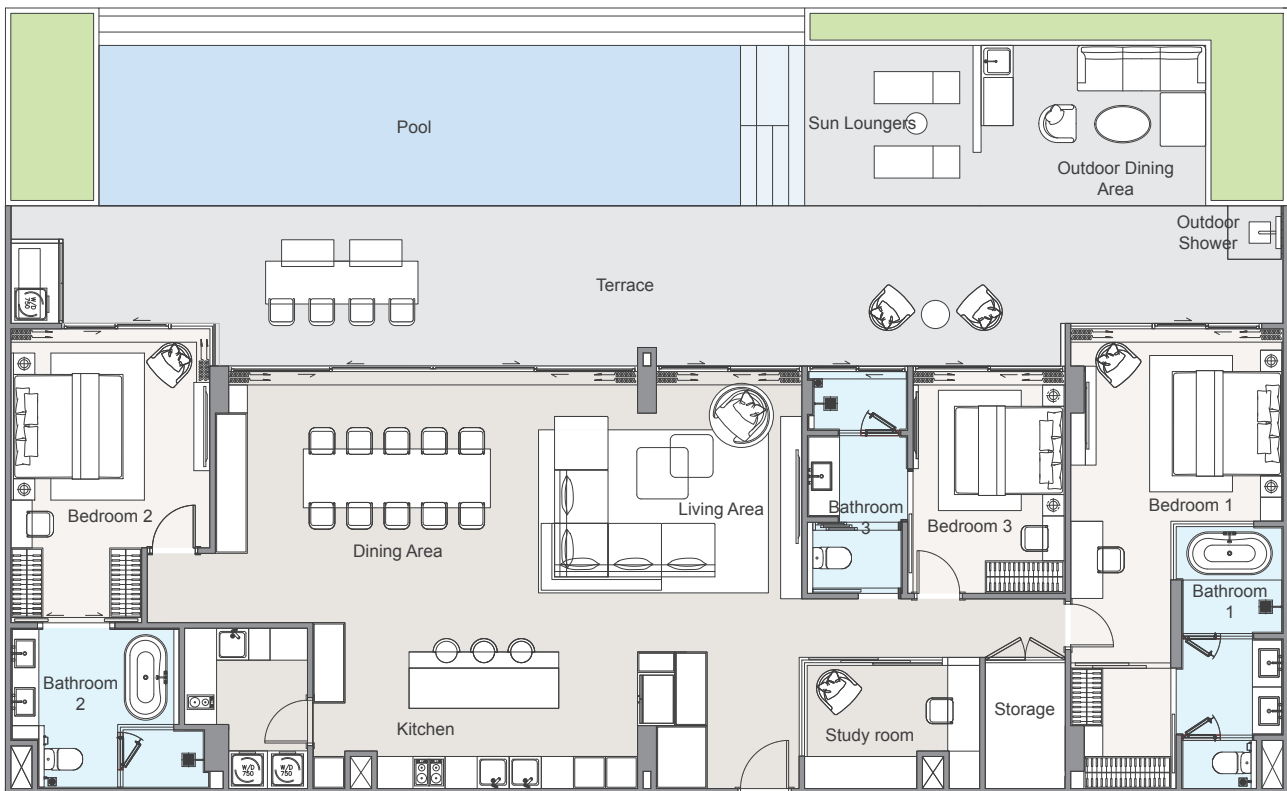


ROOFTOP FLOOR

3B-C

Internal area : 191 m²
 External area : 111 m²
 Pool : 43 m²
Total area : 345 m²

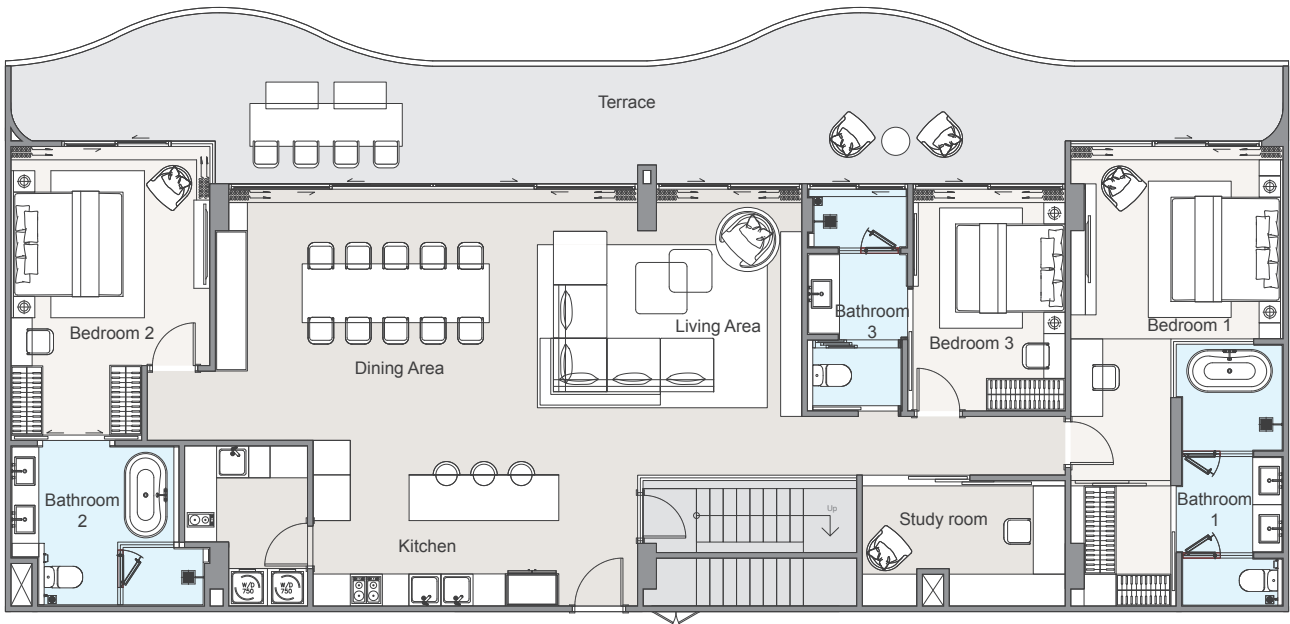
-  3-Bedrooms
-  3-Bathrooms
-  1-Living & dining area
-  1-Study room
-  1-Standalone storage
-  1-Private terrace
-  1-Private pool



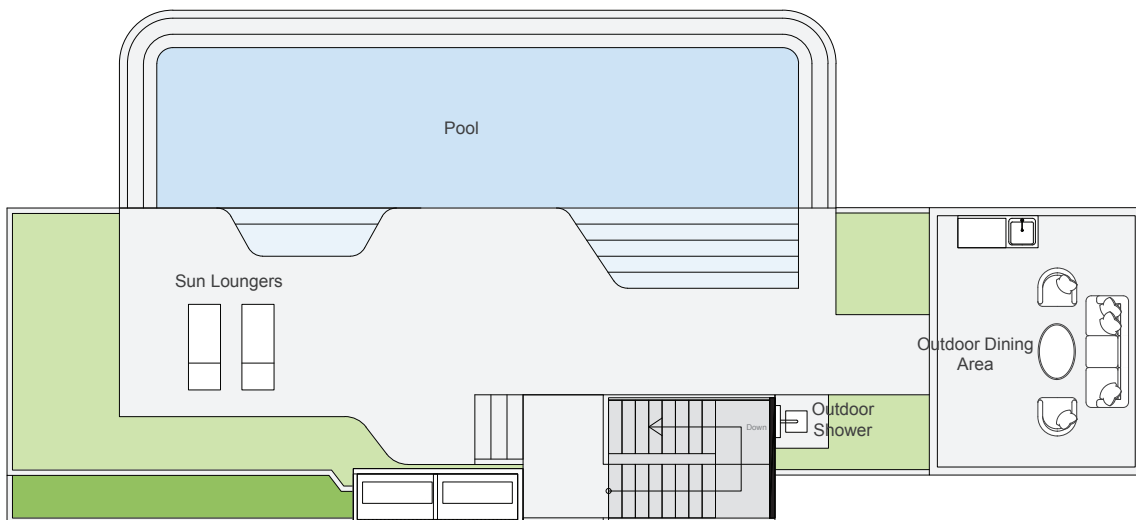
3B-D PENTHOUSE

Internal area	: 186 m ²
External area (Lower floor)	: 59 m ²
External area (Rooftop floor)	: 119 m ²
Pool	: 48 m ²
Total area	: 412 m²

- 🛏️ 3-Bedrooms
- 🚿 3-Bathrooms
- 📖 1-Study room
- 🌿 1-Private terrace
- 🏠 1-Living & dining area
- 🏊 1-Private pool



LOWER FLOOR



ROOFTOP FLOOR